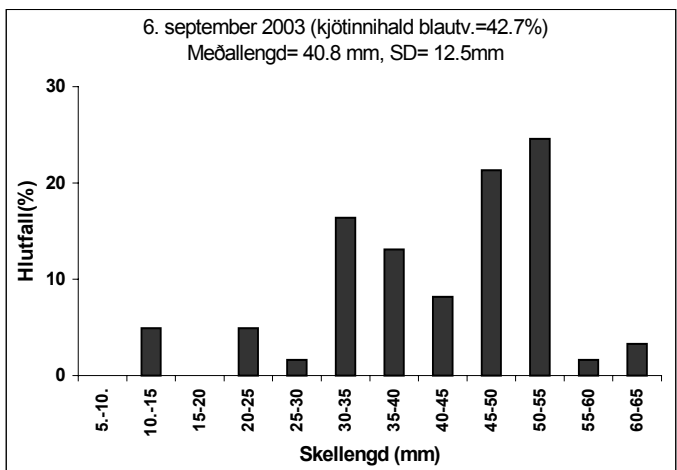
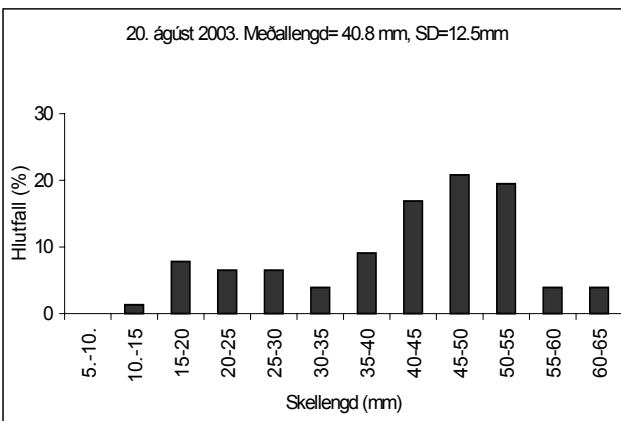
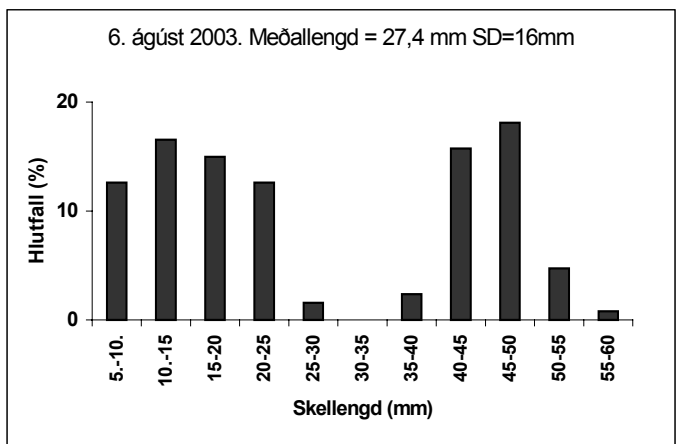
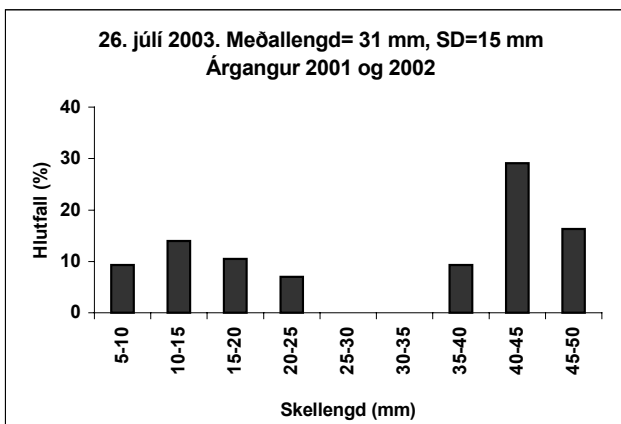
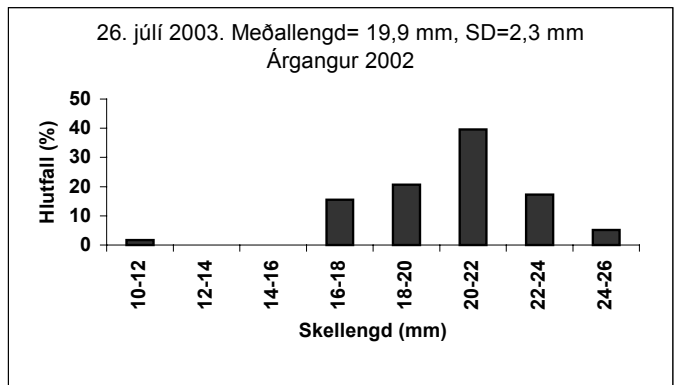
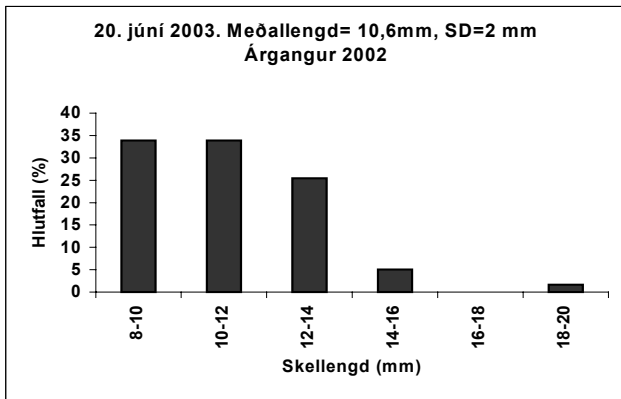
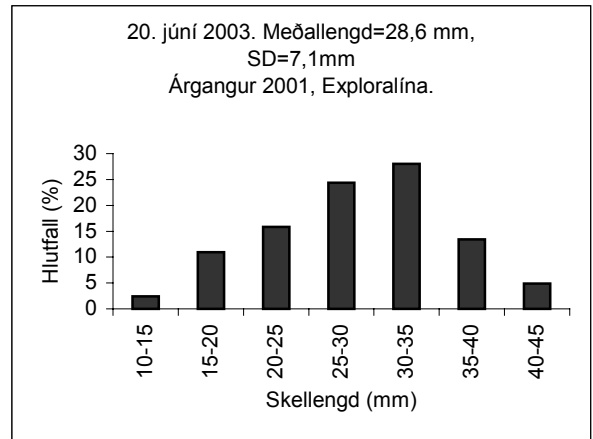


Viðauki 1. Lengdardreifing, meðallengd og staðalfrávik kræklinga

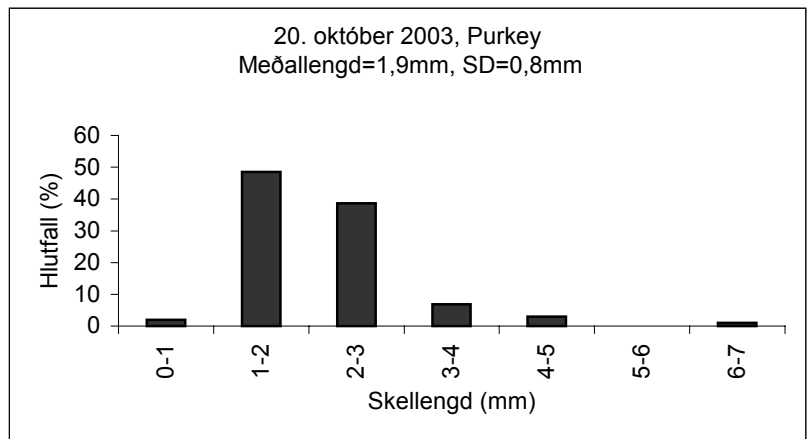
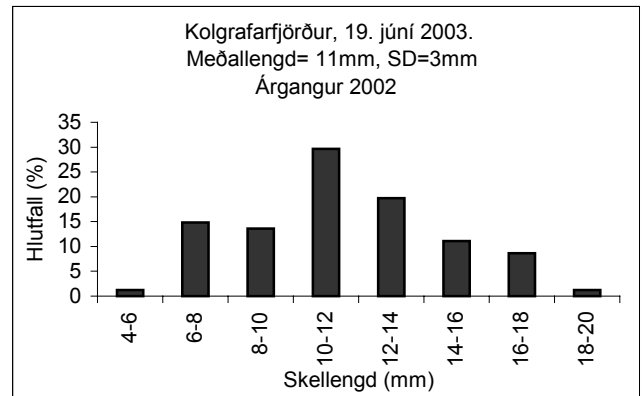


1. mynd. Lengdardreifing, meðallengd og staðalfrávik kræklinga á söfnurum v/Bjarteyjarsand júní-september 2003.

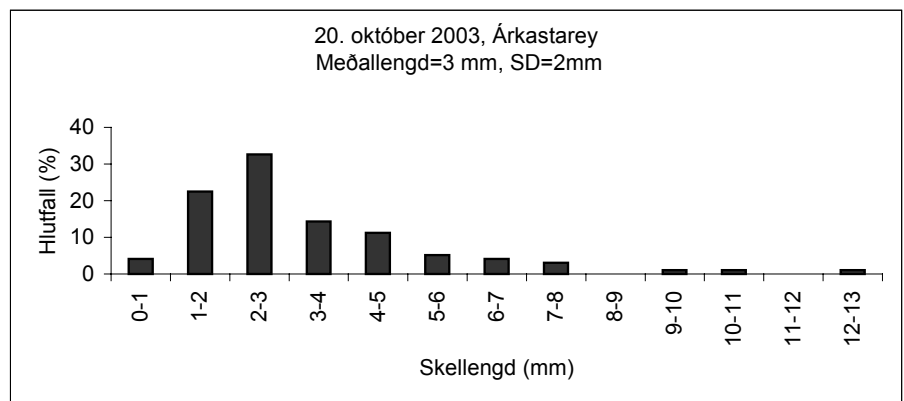
2. mynd. Lengdardreifing, meðallengd og staðalfrávik kræklinga á Explóralínunni í Hvalfirði í júní 2003. Línan hefur orðið fyrir miklu tjóni. Rak úr Hvammsvík yfir að Geirshólma þar sem hún sökk.

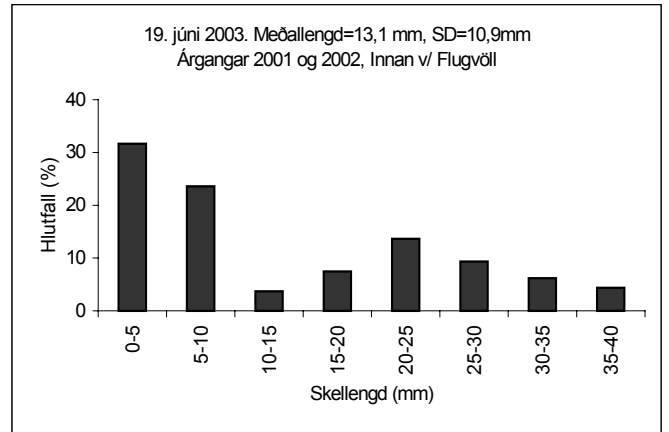
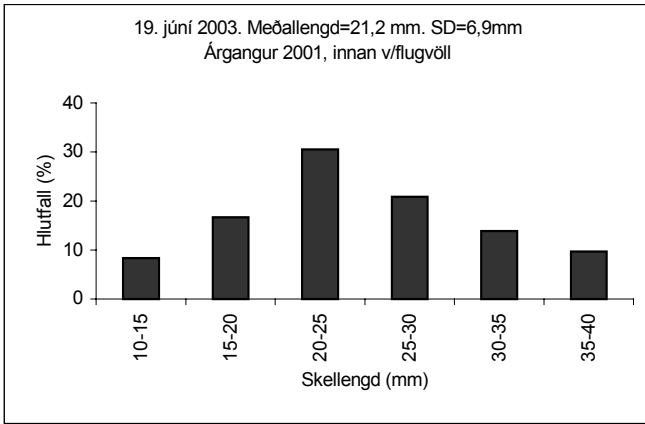


3. mynd. Lengdardreifing, meðallengd og staðalfrávik kræklinga á söfnurum í Kolgrafarfirði í júní 2003.

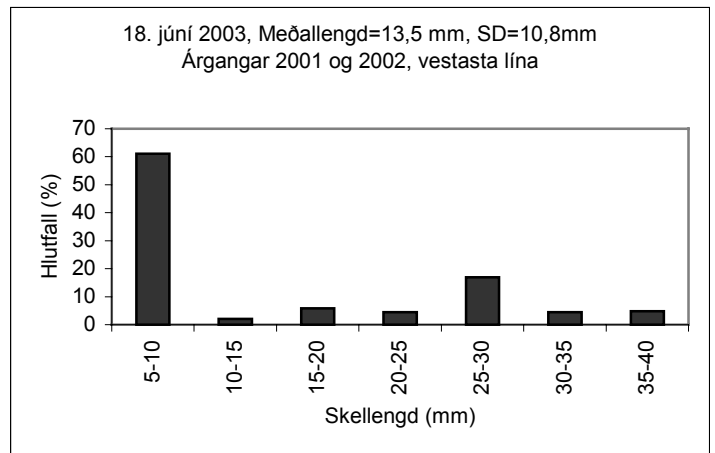


4. mynd. Lengdardreifing, meðallengd og staðalfrávik kræklinga á söfnurum í mynni Hvammsfjarðar í október 2003.

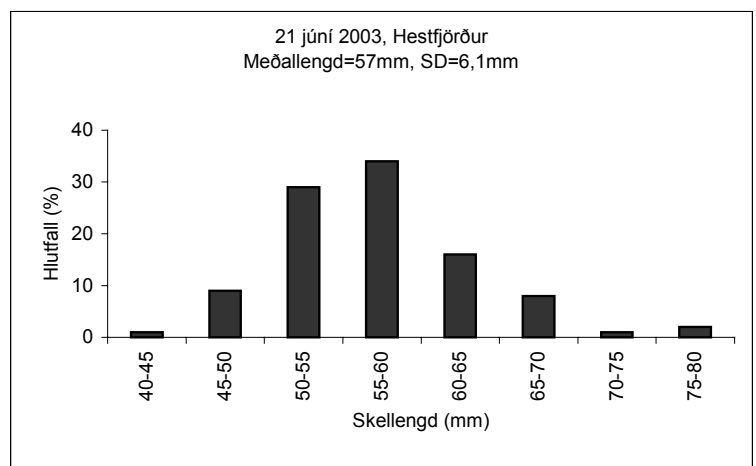




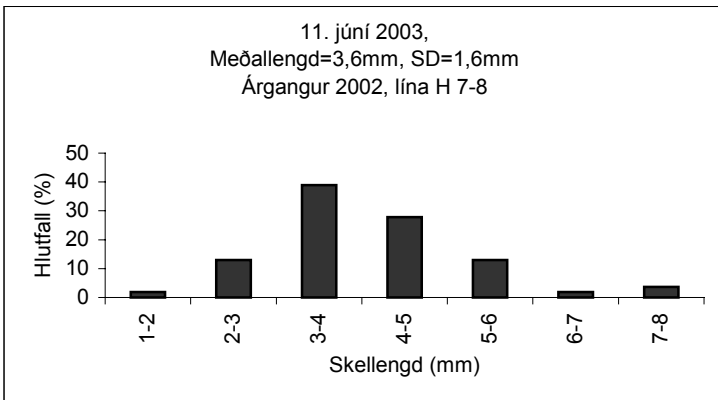
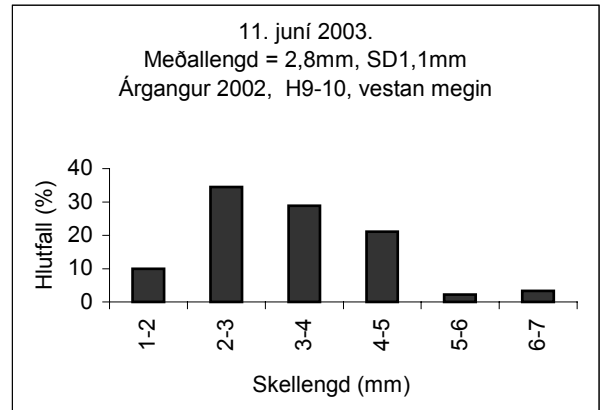
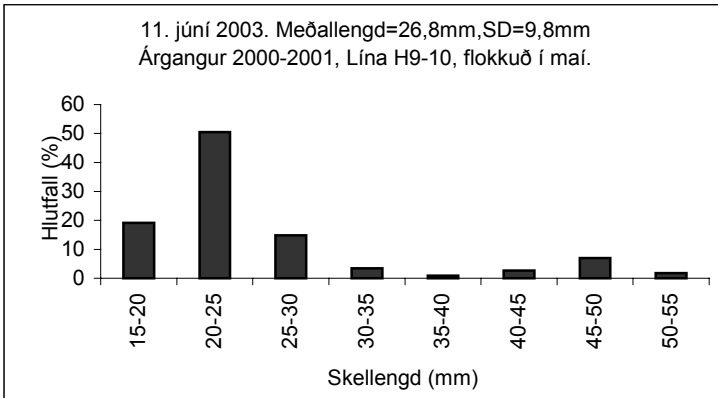
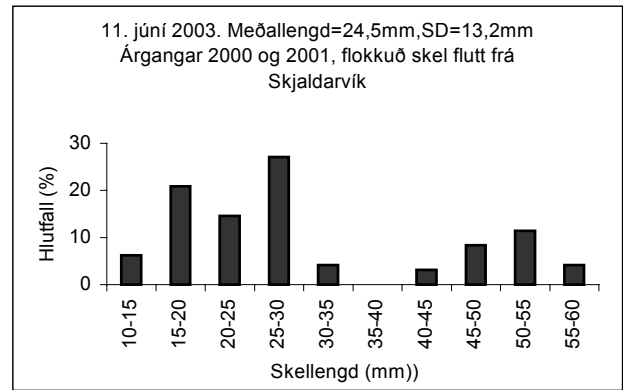
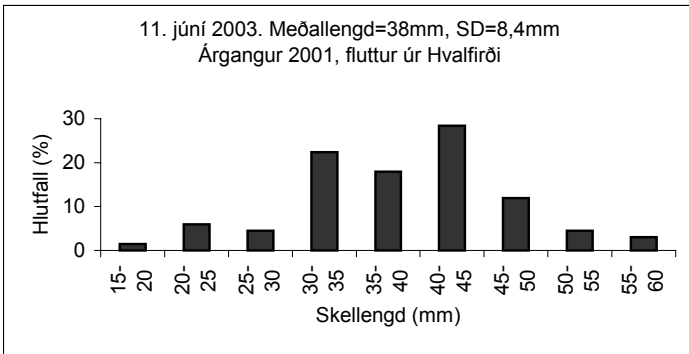
5. mynd. Lengdardreifing, meðallengd og staðalfrávik kræklinga (árg. 2001 og 2002) á söfnurum v/flugvöll í Fossfirði í Arnarfirði í júní 2003.



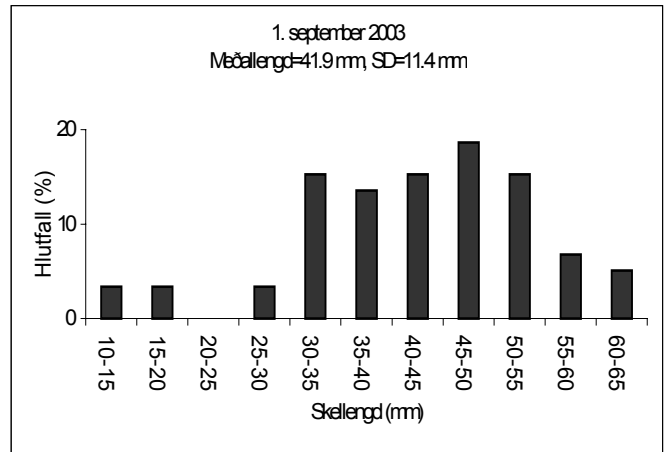
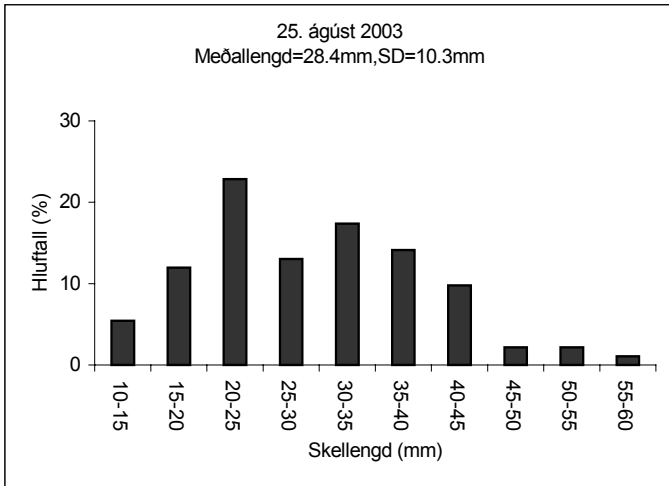
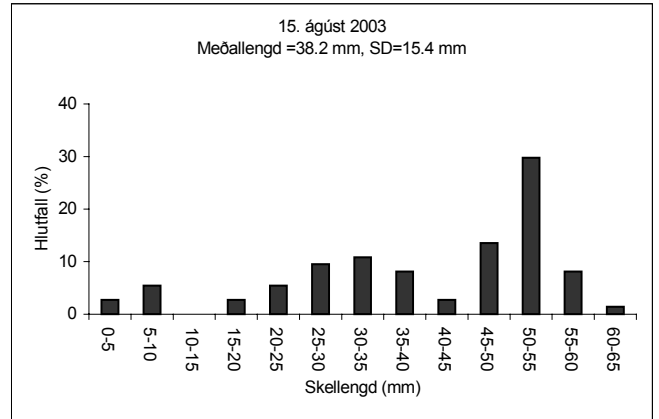
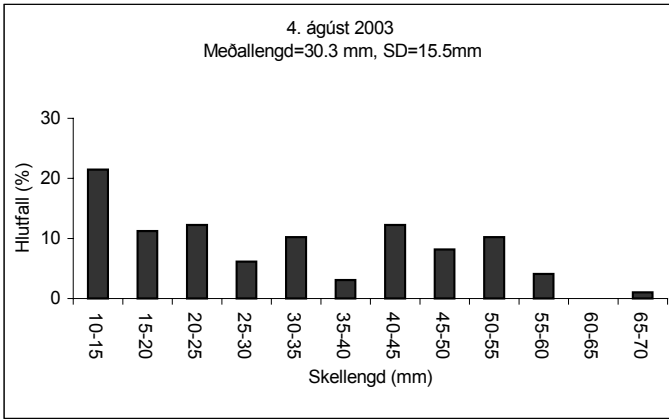
6. mynd. Lengdardreifing, meðallengd og staðalfrávik kræklinga (árg. 2001 og 2002) á söfnurum í Reykjafirði í Arnarfirði í júní 2003.



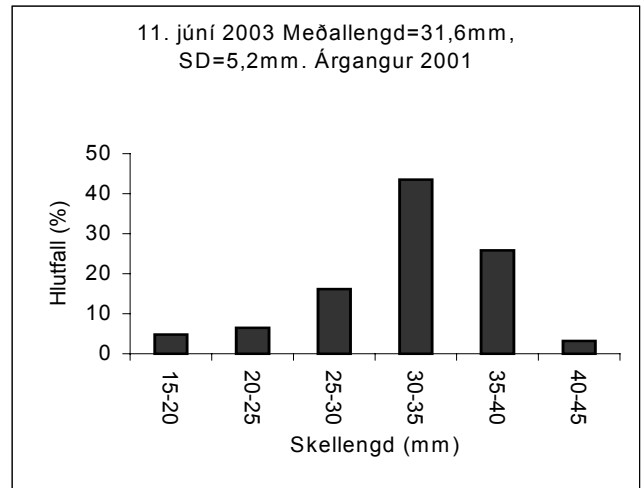
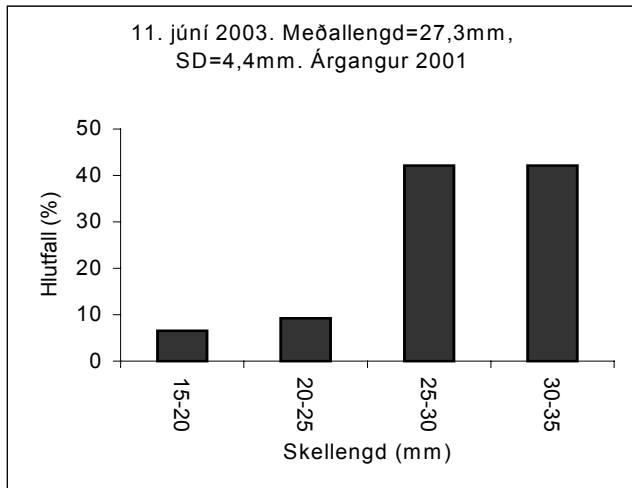
7. mynd. Lengdardreifing, meðallengd og staðalfrávik kræklinga (árg. 2000) á söfnurum í Hestfirði í Ísafjardardjúpi í júní 2003.



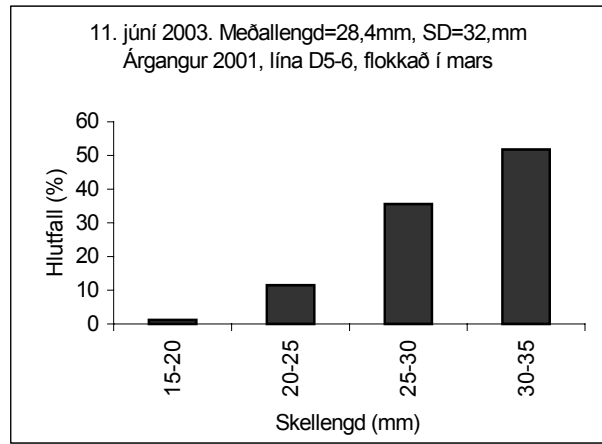
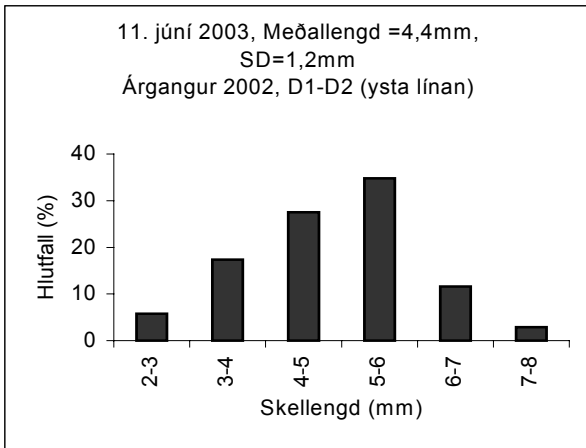
8. mynd. Lengdardreifing, meðallengd og staðalfrávik kræklinga á söfnurum við Hrísey í júní 2003.



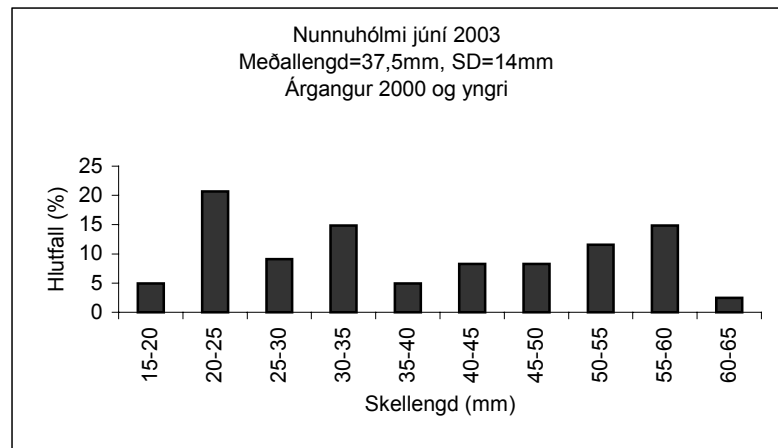
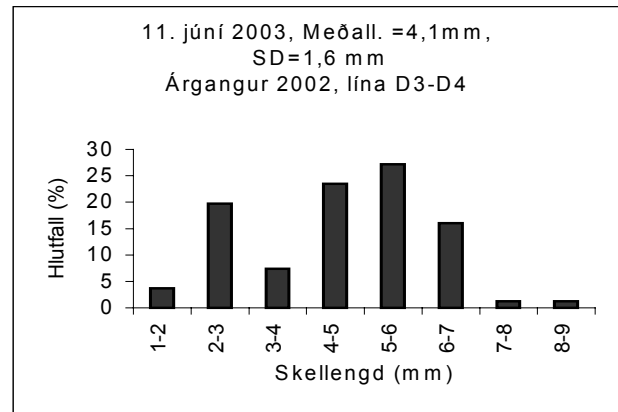
9. mynd. Lengdardreifing, meðallengd og staðalfrávik kræklinga á söfnurum við Hrísey í ágúst-september 2003.



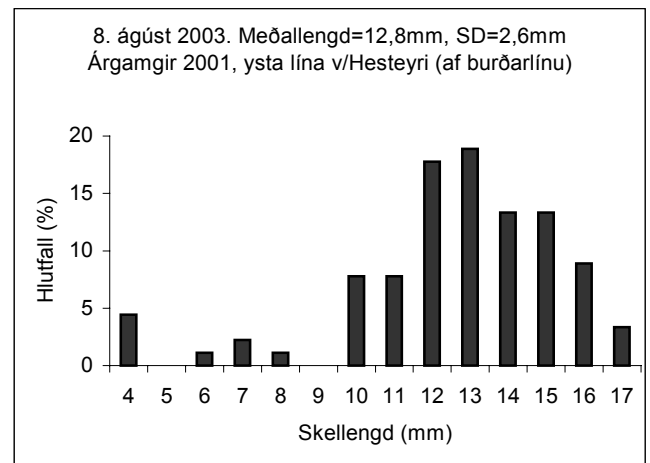
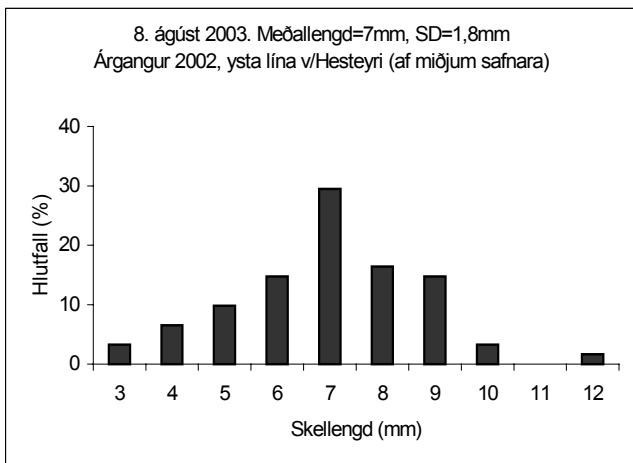
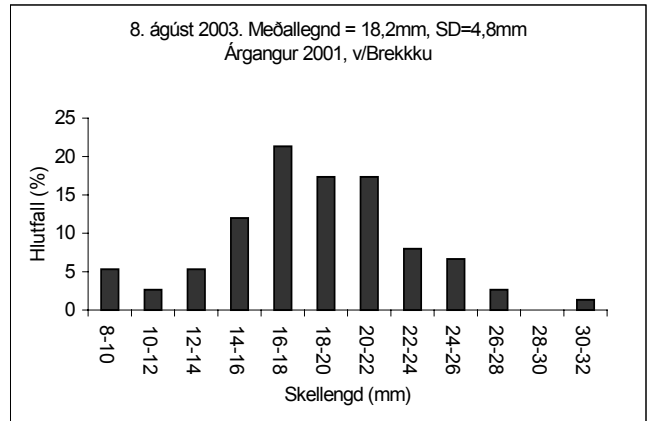
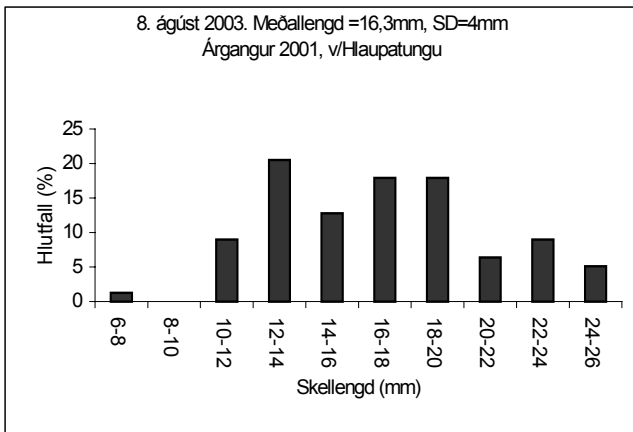
10. mynd. Lengdardreifing, meðallengd og staðalfrávik kræklinga á söfnurum í Skjaldarvík í innanverðum Eyjafirði í júní 2003.



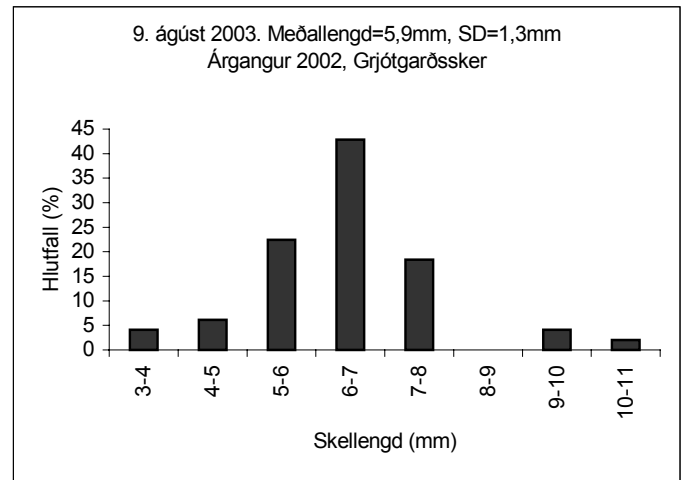
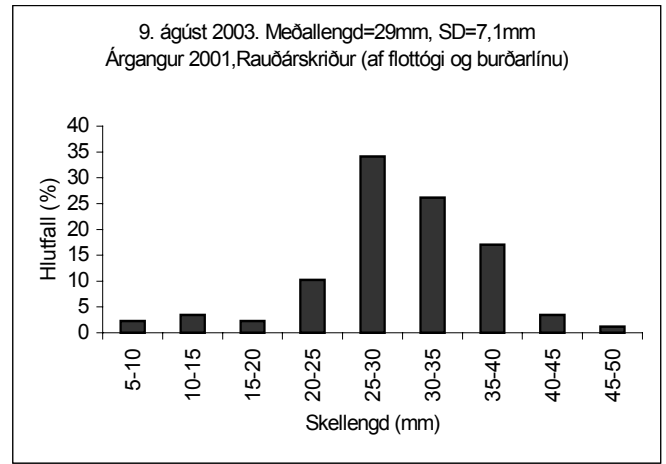
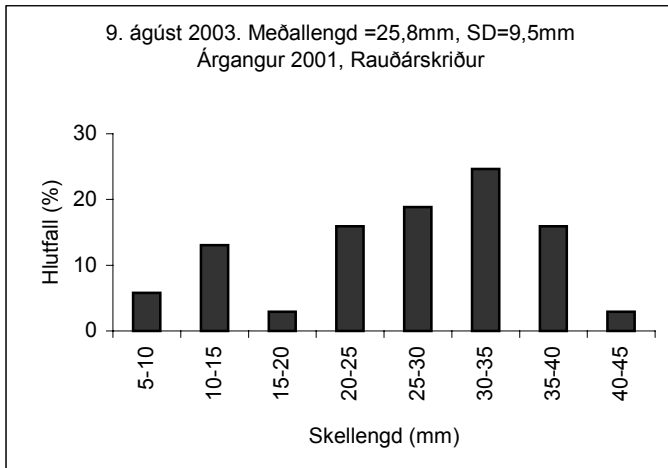
11. mynd. Lengdardreifing, meðallengd og staðalfrávik kræklinga á söfnurum v/Dagverðareyri í innanverðum Eyjafirði í júní 2003



12. mynd. Lengdardreifing, meðallengd og staðalfrávik kræklinga á söfnurum v/Nunnuhólma í innanverðum Eyjafirði í júní 2003



13. mynd. Lengdardreifing, meðallengd og staðalfrávik kræklinga á söfnurum í Mjóafirði í ágúst 2003.



14. mynd. Lengdardreifing, meðallengd og staðalfrávik kræklinga á söfnurum í Hamarsfírði í ágúst 2003. Lítið var um krækling á söfnurum og erfitt að ná sýni.